

73 GLENASHTON DRIVE

STONEY CREEK



WOOLCOTT
Pack Before You Call®

905 689 9223
woolcott.ca

Welcome to 73 Glenashton Drive

Located in a quiet mature neighbourhood, nestled under the escarpment. Step outside your backdoor and enjoy the breathtaking views of the Bruce trails! Natural sunlight illuminates the hardwood flooring throughout the main floor – perfect for entertaining. From the kitchen step out into your beautifully landscaped and meticulously maintained private backyard, featuring a brand new double tiered deck and pergola. Enjoy family movie night in your lower-level theatre room, featuring surround sound, a large projector screen and a recently updated fireplace. Also features an additional bedroom/office, renovated 3 piece bathroom and laundry room. Plenty of parking with 4+ car driveway and large 2 car garage! It is close to schools, shopping, parks and so much more!



42.72 x 119.11 Feet



\$4,169.96 in 2021



3 +1



2



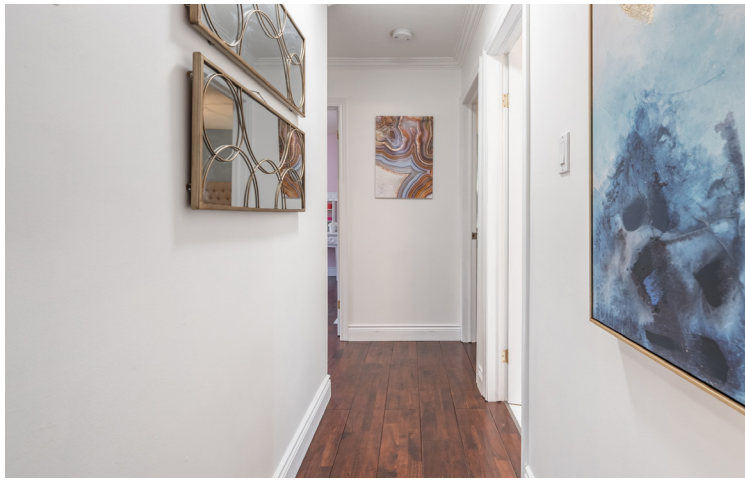


This spacious living/dining space greets you as you walk in. Enjoy the large bright windows and neutral tones.



Entertainer's Dream

This home features an updated eat-in kitchen with all new lighting, countertops, breakfast island, backsplash and tile flooring.



Room to Grow

Down the hall you will find 3 great sized bedrooms on the main floor and renovated 4 piece bathroom.





Room Measurements

MAIN LEVEL

Kitchen	18' x 8'7"
Bathroom	4 piece
Living Room	16' x 12'6"
Dining Room	11' x 9'7"
Primary Bedroom	13'6" x 11'
Bedroom	12'8" x 10'3"
Bedroom	9'6" x 9'2"
Laundry	

BASEMENT

Recroom	19'6" x 12'
Den	8'6" x 6'
Bedroom	12' x 7'
Bathroom	3 piece

Schools

Public Schools

South Meadow Elementary School

Orchard Park High School

Catholic Schools

St. Clare of Assisi Catholic Elementary School

St. John Henry Newman Catholic Secondary School





DREW WOOLCOTT
Broker

JAYNE WOOLCOTT
Sales Representative

exp
REALTY
BROKERAGE

| woolcott.ca |

905 332 9223