

5166 MULBERRY DRIVE

BURLINGTON



WOOLCOTT
Pack Before You Call®

905 332 9223
woolcott.ca

Welcome to 5166 Mulberry Drive

Beautiful and private 3 bedroom, 3 bathroom home that is move in ready in desirable Elizabeth Gardens. This home offers many updates including a brand new kitchen, pot lights and hardwood floors throughout. The backyard is full of mature trees which offers a lot of privacy and a vegetable garden. Close to parks, schools, shopping, waterfront, Appleby go train station and easy highway access. Nothing to do but move in and enjoy!!



60.01 x 120 Feet



\$4,327/ in 2021



3



2+1



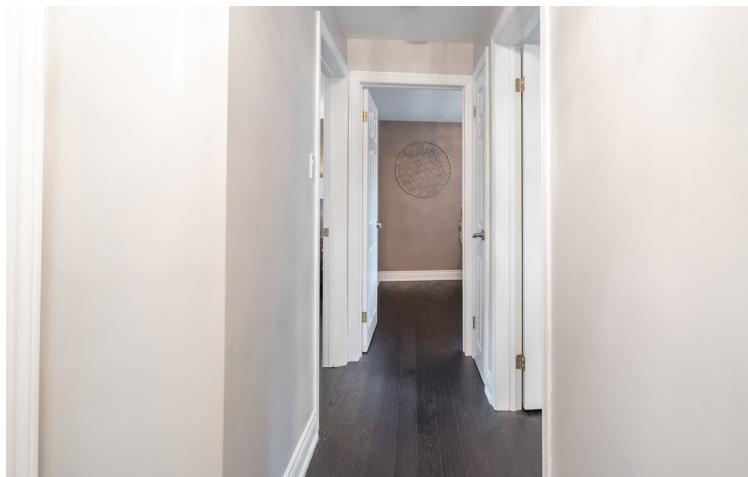


This traditional 4 level side split offers a lot of space with a full kitchen, living room, dining room, main level family room or office and a fully finished basement with a bathroom.



An Entertainer's Dream

This bright and airy kitchen overlooking the beautiful backyard is the perfect space for hosting friends and family.



Room to Grow

Down the hall on the 3rd level you will find 3 good-sized bedrooms including a cozy primary bedroom to unwind in at the end of the evening.





Room Measurements

MAIN LEVEL

Family Room 16'10" x 9'6"
Bathroom 2 piece

SECOND

Living Room 17' x 11'9"
Dining Room 9'8" x 9'1"
Kitchen 15' x 9'2"

THIRD

Primary Bedroom 13' x 10'7"
Bedroom 12'11" x 9'1"
Bedroom 9'5" x 9'1"
Bathroom 4 piece

BASEMENT

Recroom 24'5" x 11'8"
Bathroom 3 piece
Laundry

Schools

Public Schools

Mohawk Garden Elementary School (JK-GR6)

Frontenac Elementary School (GR 7-8)

Nelson High School

Catholic Schools

St. Patrick Catholic Elementary School

Assumption Catholic Secondary School





DREW WOOLCOTT
Broker

JAYNE WOOLCOTT
Sales Representative



| woolcott.ca |

905 332 9223