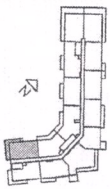
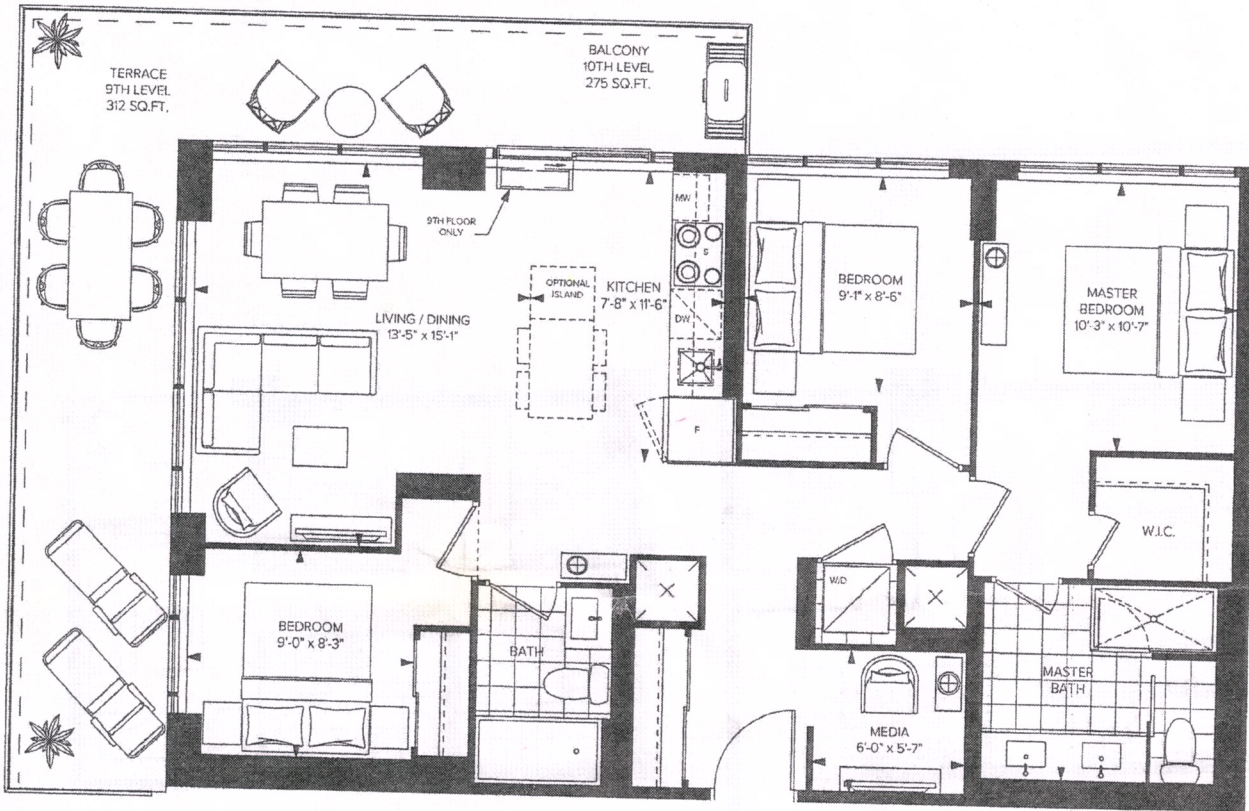


DT1084

INTERIOR: 1,084 SQ.FT.
EXTERIOR: 312 SQ.FT. / 275 SQ.FT.
3 BEDROOM + MEDIA + 2 BATH



LEVEL 9-40

DISTRIKT TRAILSIDE

This drawing is not to scale. All details and dimensions, if any, are approximate, and subject to change without notice. Floor plans are subject to change in accordance with the Condominium Documents. Balconies and terraces are shown for display purposes only and are subject to change for architectural or approval authority requirements and may vary from floor to floor. Window design may vary. Suite purchased may be mirror image of layout shown. All furniture is for illustration purposes only. Flooring patterns may vary. E. & O.E.

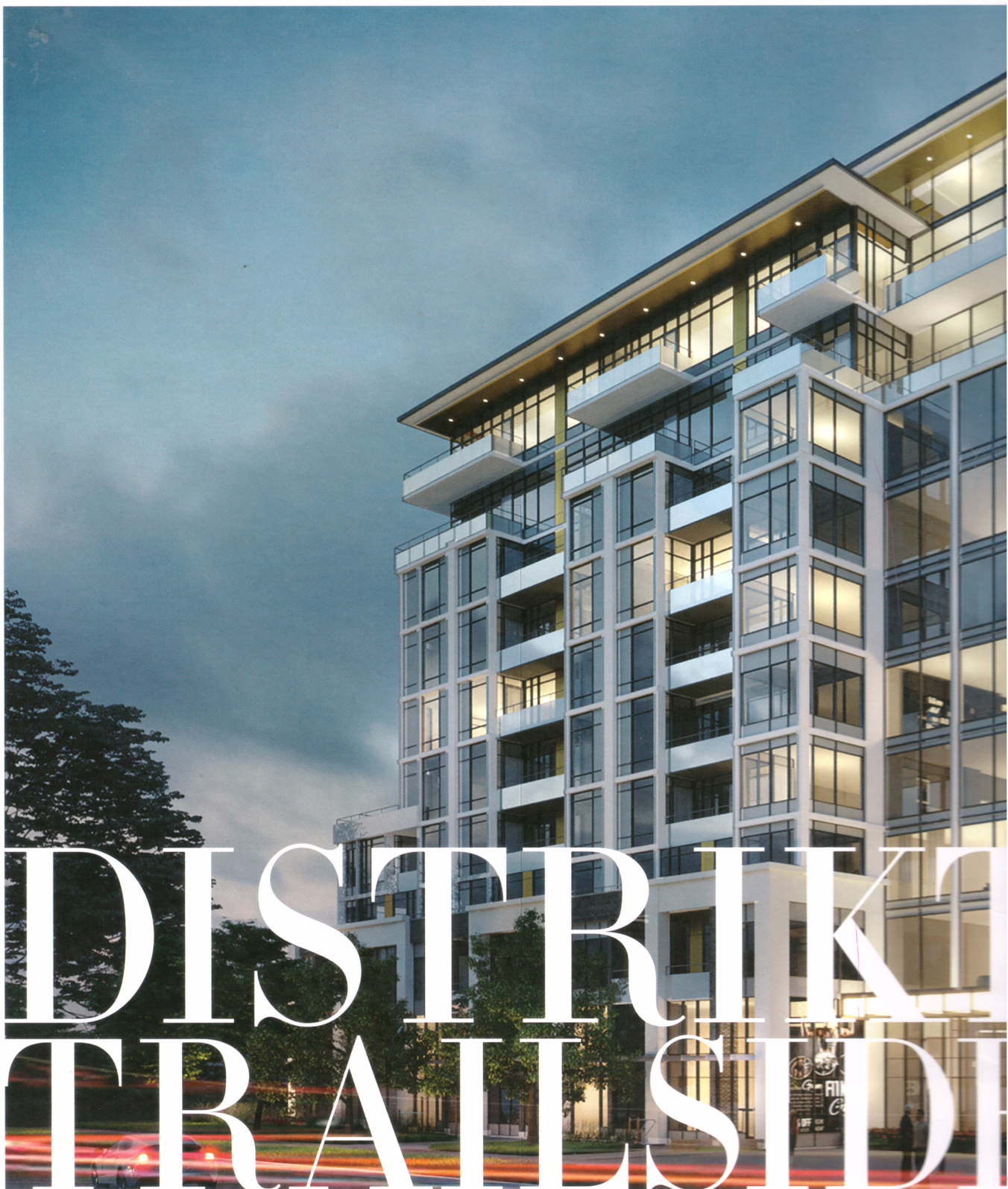


Lake Ontario

ONTARIO'S HIDDEN GEM

DISCOVER OAKVILLE'S UNIQUE CHARM

Located on the lake and surrounded by nature's magnificence, with eminently connected transit, fabulous restaurants, shopping, golf clubs, and marinas, Oakville brings inspired, dynamic living to your doorstep. Explore the charming neighbourhoods and verdant features that make Oakville living so singular.



DISTRIKT TRAILSIDE

DESIGN THAT ASTOUNDS

DISCOVER A NEW COMMUNITY NESTLED AMID THE BEST OF HISTORIC OAKVILLE. WHERE UNMATCHED ARCHITECTURAL BEAUTY COMBINES WITH SPECTACULAR VIEWS OF VERDANT PARKS AND UNTOUCHED RAVINES. WHERE LUSH SURROUNDINGS GREET EXPEDIENT TRANSIT, ENCIRCLED BY GREAT DINING, WORLD-CLASS SHOPPING, LAKE ONTARIO, AND SOME OF THE BEST PUBLIC AND PRIVATE SCHOOLS IN THE REGION.