

WELCOME TO
A428-5230 Dundas Street



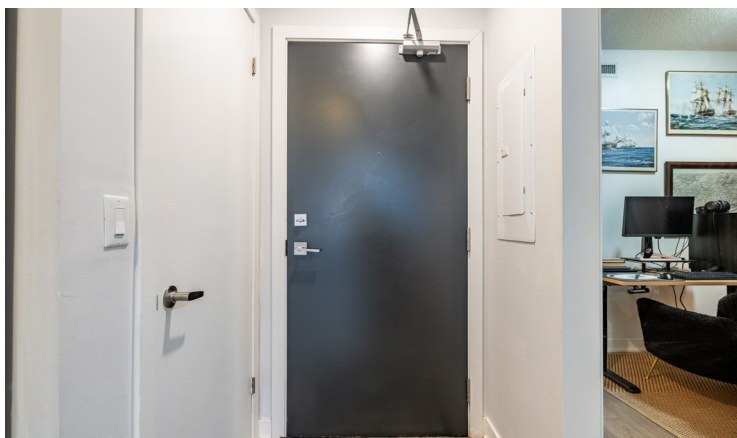
WOOLCOTT
REAL ESTATE



A428-5230 Dundas St. Welcome to this super cute one bedroom plus den, 574 square foot condo in Burlington's popular LINK building.

Perfect for first time buyers or down-sizers, this condo has modern European finishes, vinyl plank flooring, a stainless-steel fridge, oven and range and convenient in-suite washer and dryer. Enjoy north views off the covered balcony overlooking the Niagara Escarpment.

The LINK building offers all the amenities you could want: concierge, gym, party room, plunge pools, sauna and BBQ's with sitting areas. The location can't be beat, as it is just mere steps away from the biking and hiking at Bronte Creek Provincial Park and a short drive to QEW/403/407, Appleby GO station and tons of shopping, grocery and dining options.





574 Sq. Ft.



\$2,350.47 / 2024



1+1



1



Room Measurements

MAIN LEVEL

Living Room	15'4" x 7'8"
Den	8'2" x 6'
Kitchen	13'3" x 9'1"
Bedroom	10'7" x 8'5"
Bathroom	4 Piece





Drew Woolcott
BROKER

Jayne Woolcott
REALTOR®

RE/MAX ESCARPMENT
REALTY INC., BROKERAGE
INDEPENDENTLY OWNED & OPERATED

905 332 9223
woolcott.ca

