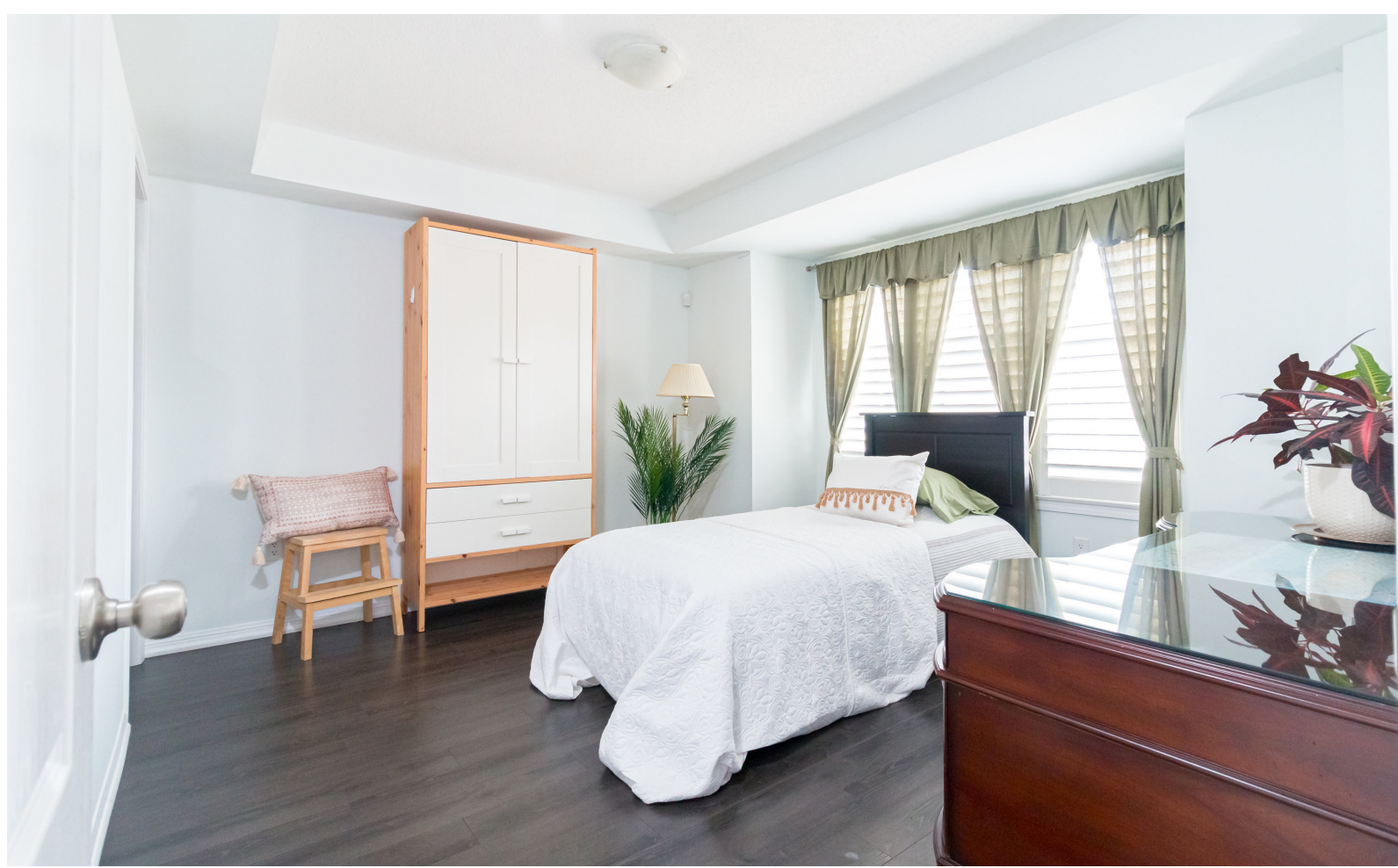


WELCOME TO
668 Sellers Path

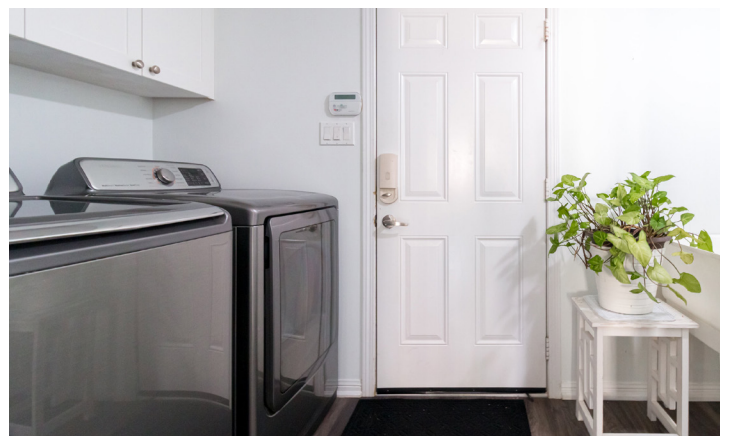
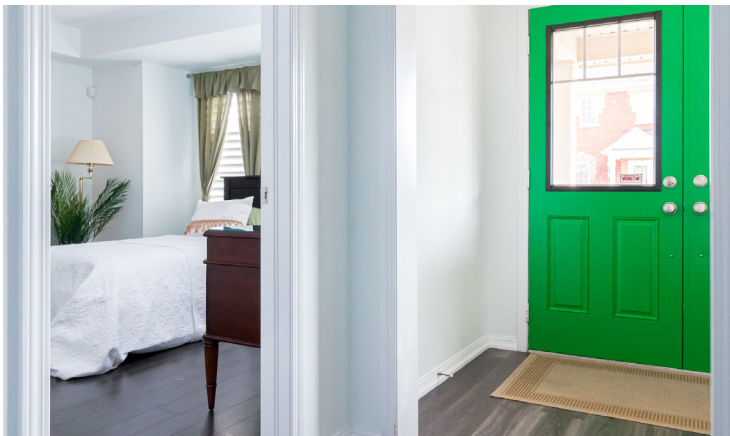


WOOLCOTT
REAL ESTATE



Perfect Family Home

Welcome to this beautifully designed, low-maintenance home featuring four spacious bedrooms and four bathrooms. The main floor offers a convenient bedroom with an ensuite and a walk-in closet! Perfect for an office, guest suite or multi-generational living





2,285 Sq. Ft.



\$4,432 / 2024



4



3+1





Great Living Space

The open concept living area is flooded with natural light. The huge living room/dining room is perfect for entertaining and this leads to a modern eat-in kitchen with an island and ample storage. The family room is surrounded by windows and walks out to a huge open terrace.





Private Retreat

Upstairs, you'll find a luxurious primary suite with huge ensuite bathroom (with a soaker tub!) and walk-in closet.





Room to Grow

Completing the upper level are two more bedrooms, a full bathroom and a private den that works as a home office or a quiet reading space.





Room Measurements

MAIN LEVEL

Bedroom	13'7 x 9'10
Bathroom	3 Piece

SECOND LEVEL

Living/Dining Room	21'1 x 12'1
Family Room	16'4 x 12'4
Kitchen	21'1 x 12'5
Bathroom	2 Piece

THIRD LEVEL

Primary Bedroom	12'4 x 15'7
Ensuite Bathroom	4 Piece
Bedroom	12'5 x 12'2
Bedroom	8'4 x 10'9
Den	8'4 x 12'9
Bathroom	3 Piece



Drew Woolcott
BROKER

Jayne Woolcott
REALTOR®

RE/MAX ESCARPMENT
REALTY INC., BROKERAGE
INDEPENDENTLY OWNED & OPERATED

905 332 9223
woolcott.ca

