

WELCOME TO
PH8-200 Stinson Street



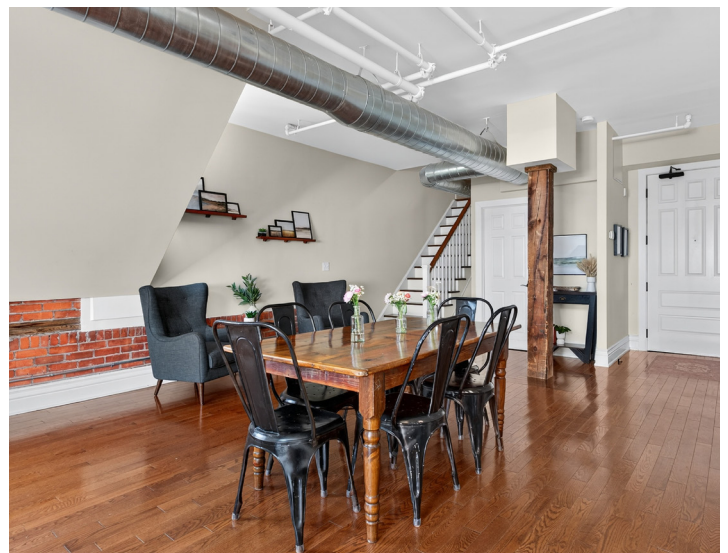
WOOLCOTT
REAL ESTATE



Heritage Loft with Soul

Welcome to Penthouse 8 in the historical heritage Stinson School Lofts. Centrally located between downtown and the escarpment, and surrounded by three Hamilton Hospitals, the GO Station, transit and bike lanes — this is an ideal location for commuters.

Step inside this bright and open two-storey loft to find gorgeous hardwood floors, exposed brick walls and soaring beamed ceilings. The open-concept main floor seamlessly connects the dining and living areas, creating an inviting space for both everyday life and entertaining.





1,835 Sq. Ft.



\$8,032 / 2025



2



2+1





A Kitchen That Wows

This Muskoka-inspired kitchen blends rustic charm with modern luxury. A 10-foot Stonex granite and quartz island anchors the space, complete with an integrated outlet for electronics. Exposed wooden beams, a brick backsplash, double undermount stainless steel sinks with Moen faucets and sleek, updated appliances complete the look. Cook dinner while enjoying stunning views through your Velux skylight windows.





Sunrise & Serenity

Upstairs, the primary suite features a colossal window that captures sunrise views of the city and escarpment. A full ensuite bathroom and a custom walk-in closet by Closets by Design complete this peaceful and private retreat.





Skylit Space with Style

The second bedroom continues the loft's character with exposed brick and a large, screened skylight that opens for fresh air. The upstairs bathrooms have been recently renovated with high-quality fixtures from Kohler and Moen. On the main floor, you'll also find a laundry room and a two-piece powder room with an Australian-inspired live-edge wooden vanity.





Stinson's Best Location

Set in the heart of the Stinson neighbourhood, this unique penthouse offers unbeatable access to Hamilton's best amenities while providing timeless character and modern finishes. A rare chance to own a piece of history with all the conveniences of today.



Room Measurements

MAIN LEVEL

Kitchen	8'9" X 14'3"
Dining Room	9' X 16'3"
Living Room	17' X 25'2"
Bonus Room	10' X 10'7"
Bathroom	2 Piece

SECOND LEVEL

Primary Bed	12'7" X 17'5"
Ensuite	4 Piece
Bedroom	9'3" X 19'9"
Bathroom	3 Piece





Drew Woolcott
BROKER

Jayne Woolcott
REALTOR®

RE/MAX ESCARPMENT
REALTY INC., BROKERAGE
INDEPENDENTLY OWNED & OPERATED

289 860 2223
woolcott.ca

