

WELCOME TO
79 Browview Drive

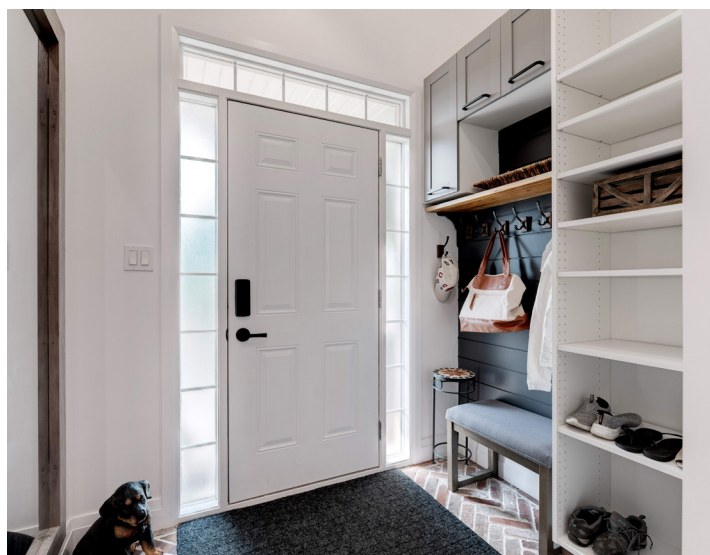


WOOLCOTT
REAL ESTATE



Light-Filled & Fully Updated

Welcome to 79 Browview Drive — a premium freehold townhome ideally located in the heart of Waterdown. Flooded with natural light from its southern exposure and a striking central skylight, this home radiates warmth throughout. Fully renovated with permits in 2022, the main level boasts an open-concept layout that flows seamlessly for entertaining and family living. Custom details like a handcrafted hickory-cladded beam and beautifully designed staircase elevate the space, while Roxul Safe'n'Sound insulation adds comfort and quiet.





1,390 Sq. Ft.



\$4,820 / 2025



3



2+1





Heart of the Home

The chef-worthy kitchen, completed in 2023, features quartz countertops, high-end finishes, and smart design built for everyday function. A centre island anchors the space, blending beautifully into the main living areas. Sleek cabinetry and stainless steel appliances make cooking feel effortless, while the open layout ensures you're always part of the conversation.





Your Private Retreat

The primary suite offers a calm, well-designed retreat. With spacious proportions and thoughtful layout, it's a place to relax at the end of the day. Paired with custom California Closets, it delivers beauty and practicality in equal measure.





Organized & Optimized

Each of the additional bedrooms is bright and well-appointed, all with custom California Closet systems that maximize organization. The central skylight continues to fill the upstairs with natural light, while the upper-level laundry with built-in storage adds convenience and function where you need it most.





Lush Looks, Zero Effort

Set on a 45 x 124-foot lot with a private driveway and single detached garage, this property has room to breathe — including space to park up to six vehicles. Just steps from the YMCA, Central Park, Burlington Library, top-rated schools and vibrant local restaurants, this is an incredible opportunity to live in one of Burlington's most desirable communities.



Room Measurements

MAIN LEVEL

Foyer	6' x 7'
Dining Room	8'6" X 6'6"
Kitchen	15'6" X 11'
Living Room	11' X 17'2"
Bathroom	2 Piece

Primary Bed	13'2" X 11'9"
Ensuite	5+ Piece
Bedroom	14'2" X 8'5"
Bedroom	10'6" X 8'5"
Bathroom	4 Piece
Laundry	6' X 4'9"

LOWER LEVEL

Basement	43' X 17'4"
----------	-------------





Drew Woolcott
BROKER

Jayne Woolcott
REALTOR®

RE/MAX ESCARPMENT
REALTY INC., BROKERAGE
INDEPENDENTLY OWNED & OPERATED

905 689 9223
woolcott.ca

