

WELCOME TO
65 Thistlemoor Drive



WOOLCOTT
REAL ESTATE



Bright Everyday Living

Welcome to this well-maintained 1,400 sq ft bungalow, built in 1998 and thoughtfully laid out for practical everyday living. A spacious foyer leads into a bright living room that sets the tone with warmth and natural flow, followed by a formal dining area well suited for family meals or hosting with ease.





1,410 Sq. Ft.



\$4,568 / 2025



2+2



2+1





Heart of Home

The updated kitchen impresses with white shaker cabinets, sleek black quartz countertops and a breakfast bar island overlooking the family room, while sliding doors open to the backyard, making outdoor enjoyment feel like a natural extension of the home.





Rest & Recharge

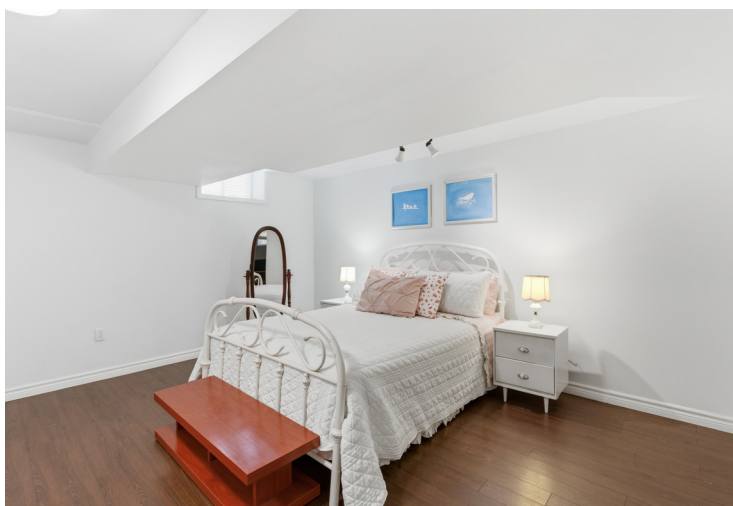
The main floor offers a comfortable bedroom, a full bath with ensuite privilege, a generous primary suite with walk in closet and a convenient powder room for guests.





Flexible Lower Level

The finished lower level enhances the living area with a spacious recreation zone, two additional well sized bedrooms, a full four-piece bath and abundant storage, providing room for relaxation, extended family, play, fitness or quiet retreat.





Close to Everything

With a driveway accommodating two extra vehicles and a location just moments from an elementary school, parks, shopping and key amenities, this property blends comfort, function and location in a welcoming package that is easy to feel at home in.



Room Measurements

MAIN LEVEL

Living Room	17'10" X 17'5"
Family Room	13'10" X 14'2"
Dining Room	8'6" X 13'8"
Kitchen	10'8" X 13'9"
Primary Bed	11'8" X 12'
Ensuite	4 Piece
Bedroom	12' X 10'11"
Bathroom	4 Piece

LOWER LEVEL

Rec Room	26'3" X 18'2"
Bedroom	16'4" X 13'3"
Bedroom	16'4" X 12'7"
Bathroom	4 Piece





Drew Woolcott
BROKER

Jayne Woolcott
REALTOR®

RE/MAX ESCARPMENT
REALTY INC., BROKERAGE
INDEPENDENTLY OWNED & OPERATED

905 332 9223
woolcott.ca

