

WELCOME TO  
**5010 Bunton Crescent**



**WOOLCOTT**  
REAL ESTATE



## A Warm Welcome To The Orchard

Welcome to this classic two-storey home nestled in the highly sought-after, family-friendly Orchard neighbourhood. Situated on an extra-wide lot, this property offers fantastic curb appeal with a charming covered front porch and a two-car driveway.

Inside, you'll find a bright and inviting open-concept living and dining area featuring rich hardwood floors, LED pot lights and elegant California shutters throughout. The beautifully updated kitchen showcases white shaker cabinetry, quartz countertops, a stylish tile backsplash, stainless steel appliances and a sleek hood fan. An eat-in area provides the perfect spot for casual meals, with a walkout to a spacious backyard deck ideal for entertaining.





1,679 Sq. Ft.



\$5,344 / 2025



3



2+1





## Comfort At The Center

Comfortable, light filled bedrooms paired with a beautifully updated bathroom designed for everyday ease.





## Rest & Recharge

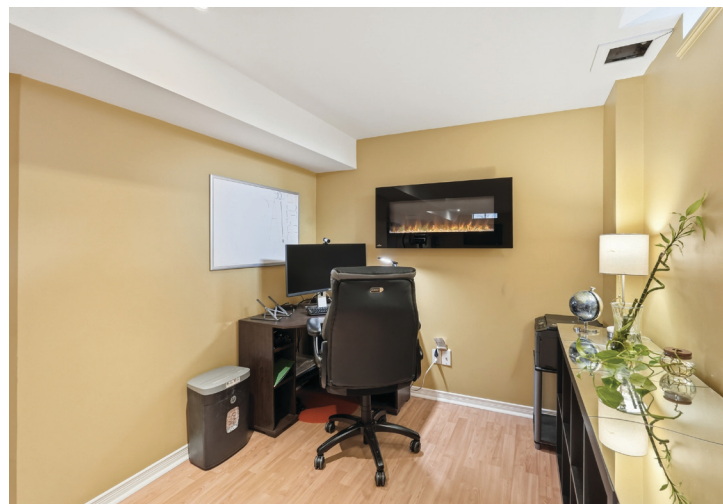
A bright staircase leads to the upper level, where you'll find three generously sized bedrooms. The primary suite offers a walk-in closet and a luxurious four-piece ensuite complete with a separate tub, while the main bathroom is finished with a modern quartz vanity.





## Flexible Living Below

The fully finished basement expands your living space with a large family room, a dedicated laundry area and ample storage.





## Space To Actually Enjoy

Outside, the backyard is designed for both relaxation and play, featuring a two-tiered deck and plenty of green space to run around.

Ideally located within walking distance to shopping, dining, great schools, parks and transit, this home also offers quick access to major highways including the QEW, 403, 407 and Highway 5, as well as Appleby GO.



## Room Measurements

### MAIN LEVEL

Living Room	19'1" X 10'
Dining Room	19'1" X 10'
Kitchen	14' X 10'11"
Family Room	10'11" X 10'11"
Bathroom	2 Piece

### UPPER LEVEL

Primary Bed	10'11" X 16'11"
Ensuite	4 Piece
Bedroom	10'11" X 10'
Bedroom	10' X 10'
Bathroom	4 Piece

### LOWER LEVEL

Rec Room	10' X 24'
Laundry	





**Drew Woolcott**  
BROKER

**Jayne Woolcott**  
REALTOR®

**RE/MAX** ESCARPMENT  
REALTY INC., BROKERAGE  
INDEPENDENTLY OWNED & OPERATED

905 332 9223  
woolcott.ca

