

WELCOME TO
1302-360 Pearl Street



WOOLCOTT
REAL ESTATE



360 Degrees Of Luxury

Welcome to this exceptional 1,330-square-foot corner suite at the prestigious 360 on the Pearl condominium. Enjoy a prime downtown location from this fully renovated 13th-floor residence with panoramic views of Lake Ontario, the city, and the escarpment.

This two-bedroom, two-bathroom suite features an open-concept layout with floor-to-ceiling windows, automated curtains and shades, 9-foot ceilings, and a desirable split-bedroom floor plan.





1,332 Sq. Ft.



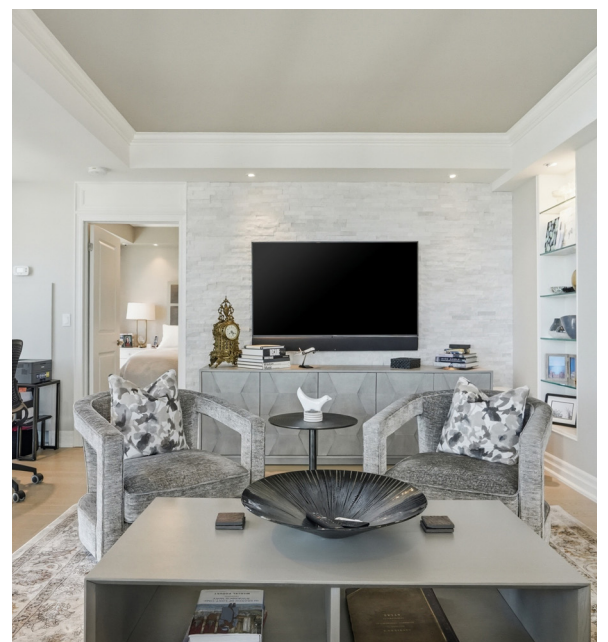
\$7,380 / 2026



2



2





Luxury In Every Detail

The beautifully renovated kitchen showcases a large waterfall island with breakfast bar, Wolf gas cooktop and built-in oven, Dacor refrigerator, Miele dishwasher, quartz countertops, a stylish stone backsplash, and accent lighting throughout. The spacious great room offers dedicated dining space and plenty of room for entertaining or relaxing at home.





Rest With A View

The primary bedroom features lake views, a walk-in closet with organizer system, and a renovated 5-piece ensuite with soaker tub, walk-in shower, double vanity, and oversized lighted mirror.





Comfort Meets Convenience

The second bedroom, located on the opposite side of the suite for added privacy, also enjoys lake views. The in-suite laundry includes a stackable Miele washer and dryer with integrated filtration and additional storage.



Resort-Style Amenities

Residents of 360 on the Pearl enjoy outstanding amenities including a rooftop terrace with BBQs, fitness centre and steam room, party room, private theatre, and 24-hour concierge and security. A rare opportunity to own one of Burlington's premier condominium suites.



Room Measurements

MAIN LEVEL

Great Room	24' X 16'
Kitchen	9' X 14'
Primary	13' X 13'
Ensuite	5 Piece
Bedroom	13' X 13'
Bathroom	3 Piece
Laundry	



Drew Woolcott
BROKER

Jayne Woolcott
REALTOR®

RE/MAX ESCARPMENT
REALTY INC., BROKERAGE
INDEPENDENTLY OWNED & OPERATED

905 332 9223
woolcott.ca

